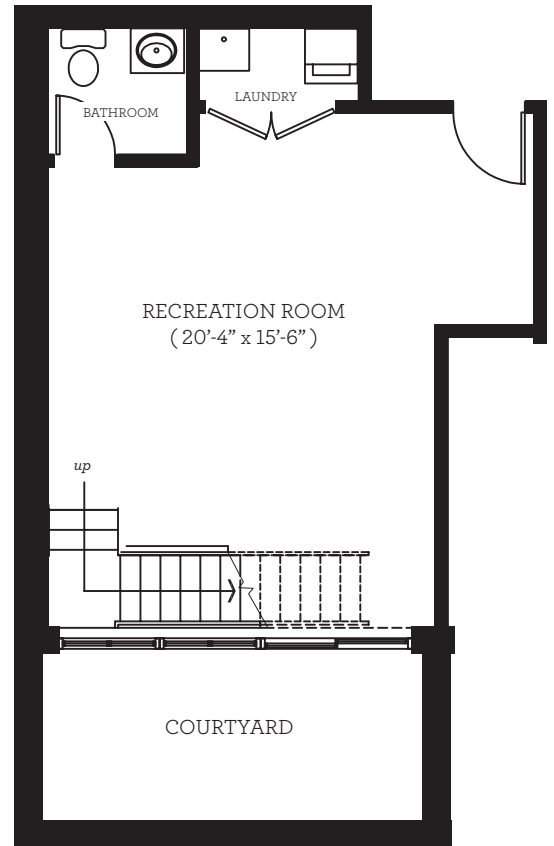
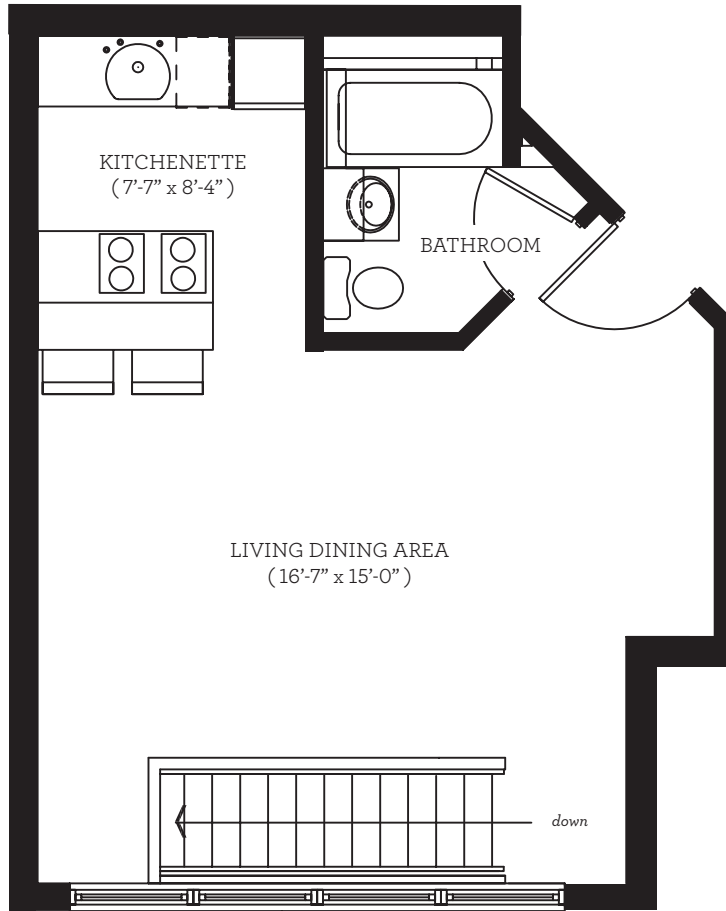




259 AINSLIE

WILLIAMSBURG, BROOKLYN



UNIT 1

259 Ainslie Street, Brooklyn New York 11211

920.3 sqft

n

The complete offering terms are available in an offering plan from the Sponsor. CD# 08-0460. Sponsor: 259 Ainslie Corp.

The unit square footage, layout and room area dimensions on this floorplan are appropriate within reasonable tolerances and based on construction drawings. The unit when built will be subject to normal construction variances and tolerances. The square footage exceeds the usable floor area. Room and area dimensions are measured from the exposed surfaces to the enclosing walls, chase walls, shafts, cabinets and the like are not subtracted. A minor or immaterial inaccuracy in the actual square footage (i.e. overall floor area) or the actual size individual rooms or areas of a unit when built from that shown on this floorplan shall not excuse a purchaser from completing the purchase of a unit without abatement in price or recourse against sponsor. Sponsor reserves the right to make changes to a unit in accordance with the offering plan.

EXCLUSIVE MARKETING AND SALES AGENT:

aptsandlofts.com

we've got your space

